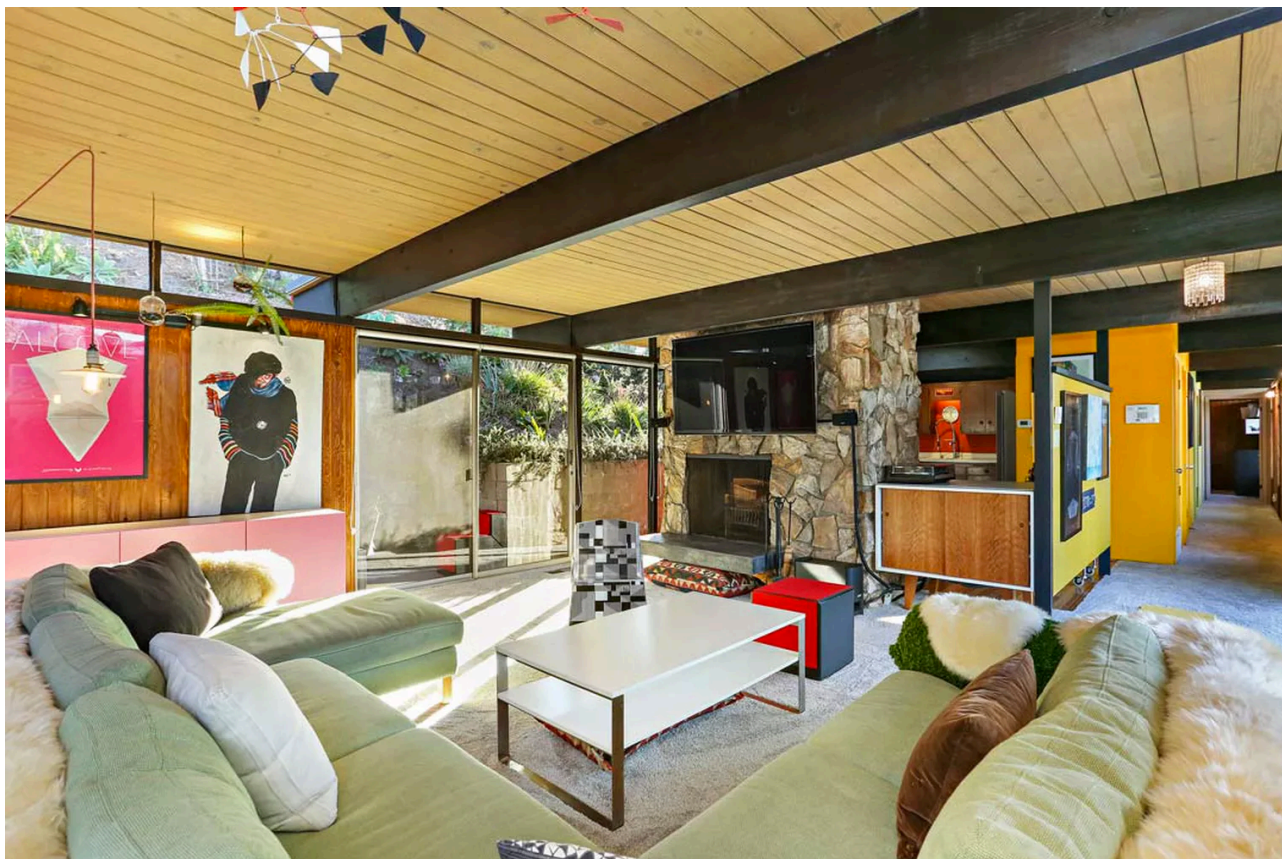


EAGLE ROCK FOR SALE IN LOS ANGELES

# Chipper midcentury post and beam in Eagle Rock asks \$1.25M

*The glassy residence is perched on a hill among the trees*

By **Elijah Chiland** | Oct 5, 2017, 9:21pm PDT



Built in 1961, the house has beamed ceilings and a central stone fireplace. Photos by Charmaine David, courtesy [Tracy Do](#)

This personable residence sits perched on a hill in Eagle Rock, enveloped by nearly half an acre of woodsy surroundings. Built in 1961, it was designed by architect Dick E. Lowry and appears to have been given a colorful makeover since it **last sold** in 2007 (for \$640,000).

The 1,292-square-foot home has two bedrooms and 1.5 bathrooms with open living spaces and walls of glass that give it an airy feel. The living room is framed around a large stone fireplace and opens to a wide deck with views across the treetops.

The kitchen has been updated with a few modern appliances, but retains some nice dark wood cabinetry that lends to the post and beam home's midcentury aesthetic. Beamed ceilings and wood-paneled walls extend into both bedrooms and glass sliding doors in multiple rooms lead to outdoor spaces.

An office space sits below the home and a separate detached shed provides a bit of extra storage. Gardens and trails extend throughout the verdant lot, which, per the **listing**,



consists of three separate parcels—giving buyers opportunities for new development or simply a bit of extra privacy.

Asking price is \$1.249 million. Open houses are scheduled for Saturday and Sunday between 2 and 4 p.m., Tuesday between 11 a.m. and 2 p.m., and Thursday between 10 a.m. and 2 p.m.

- 1404 Oak Grove Drive [Tracy Do | Compass Realty]

