

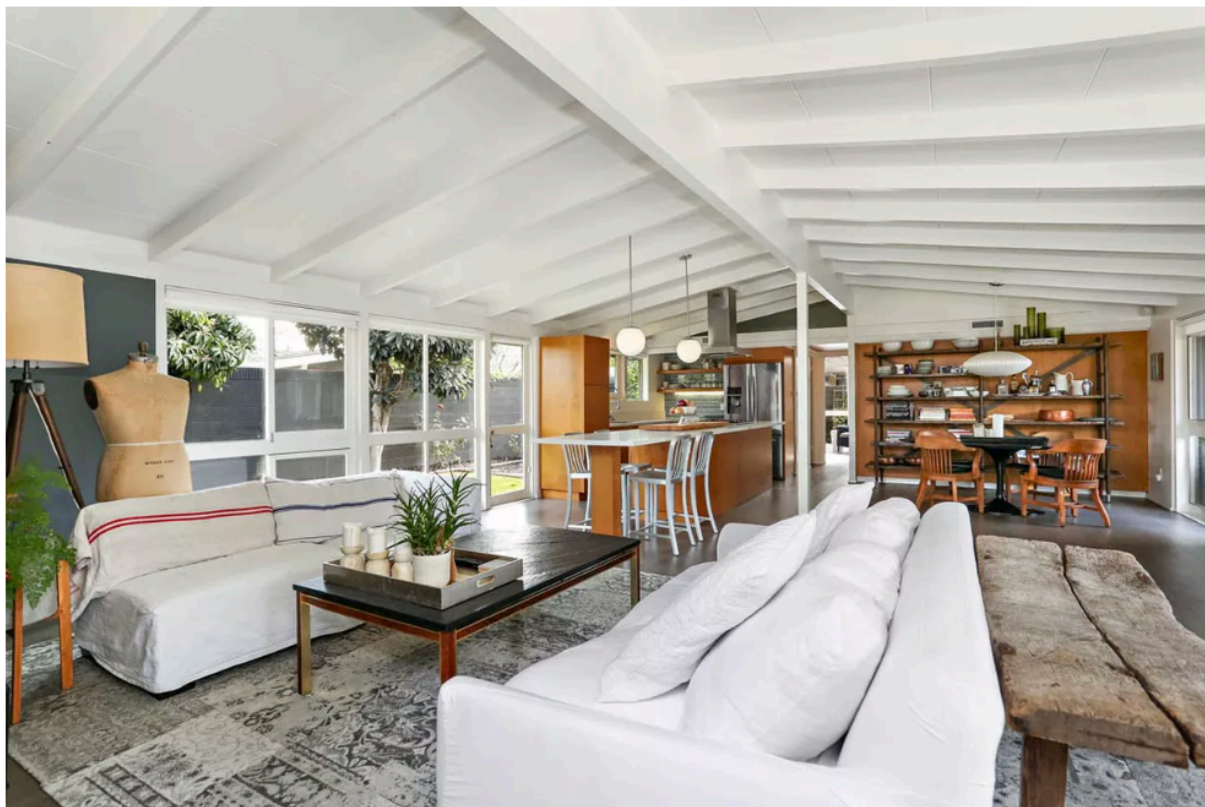
HOMES FOR SALE LONG BEACH CLIFF MAY

Built in 1952, this updated Cliff May in Long Beach looks fresh for \$899K

5

The ranch-style features cork floors, quartz countertops

By **Bianca Barragan** | Jan 23, 2018, 7:30pm PST



Photos by Charmaine David. | Courtesy of Tracy Do/Compass

This single-story **Long Beach** house was built in 1952—but it's no time capsule. The updated Cliff May rancher features high, beamed ceilings, walls of windows, and cork flooring.

The living and dining rooms feature cork flooring, while the kitchen, open to the living areas, holds an island, quartz counters, and stainless steel appliances.

The dwelling holds three bedrooms, including a master suite with double doors that open to a courtyard and the back yard. Outdoor

areas include a patio with pavers and a spacious front yard with what appears to be very low-maintenance landscaping.



The **Rancho Estates** neighborhood, where this house is located, was an entire housing tract designed by May in the early 1950s. The 700-house development was created to “offer the latest in modern living to potential buyers looking for a piece of postwar suburbia to call their own,” says the **LA Conservancy**.





This Rancho Estates property is listed for \$899,000.

- 3032 Shipway [Tracy Do/Compass]

<https://la.curbed.com/2018/1/23/16923822/long-beach-midcentury-modern-cliff-may-for-sale>