

REAL ESTATE

Listed at \$950K, This Clean-Lined Cottage in Los Angeles Is a Fresh Take on City Living

By Kathryn M. — November 24, 2020

 [View 16 Photos](#)

Tucked away in Glassell Park, this sunny 1940 home emphasizes indoor/outdoor flow.

Originally built in 1940, this remodeled two-bedroom cottage in Los Angeles's Glassell Park neighborhood perches on an elevated corner lot, enjoying hilltop views as well multiple outdoor spaces.



Recently listed in the Glassell Park neighborhood of Los Angeles, this renovated and expanded 1940s cottage sits on an elevated lot above other homes on the street. Multiple patios surround the L-shaped structure, providing a welcoming entrance.



The sun-drenched interior comprises several living spaces including a central seating area and adjacent multipurpose space. A modern kitchen, dining area, and home office are located in a large, free-flowing space to the right.



The open-concept layout spans 1,457 square feet and situates large living and dining areas at the front of the home, affording directing access to the outdoors. The two bedrooms are tucked toward the rear, getting generous amounts of

sunlight. Throughout the home, minimalist finishes allow the custom details to shine: handmade cabinetry, beamed ceilings, designer light fixtures, and built-ins.

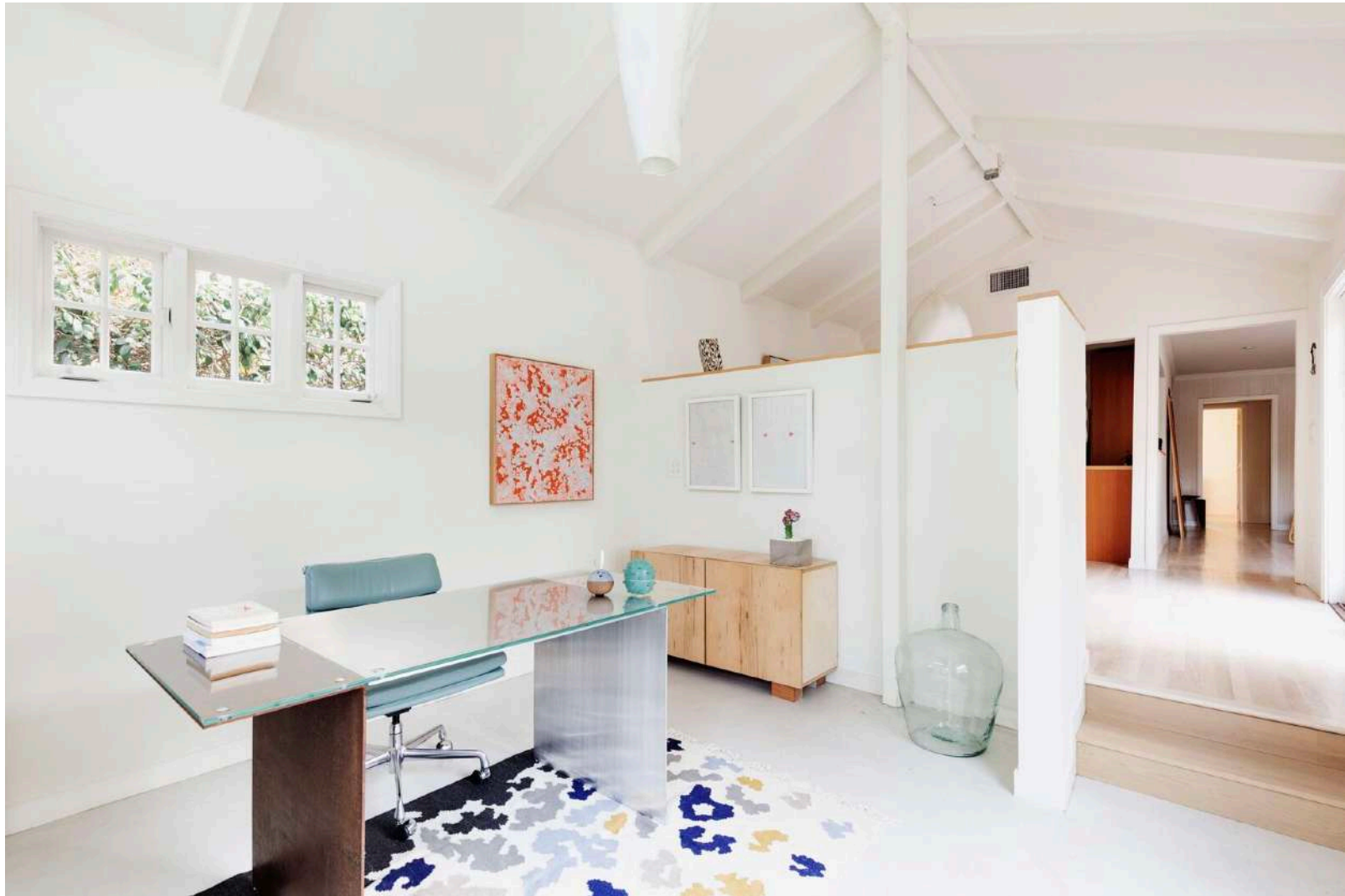




On the opposite side of the home, a galley-style kitchen features a large pass-through connecting to the living room. Handmade wood cabinetry, open shelving, and updated appliances round out the space.



Adding to the home's appeal are a large driveway, two-car garage, and lush plantings bordering the lot. The property provides easy access to the area's cafes, parks, and hiking trails.



A sunken home office sits just behind the dining area. The brightly lit space benefits from several casement and clerestory windows along three sides of the room.







3872 Cazador Street in Los Angeles, California, is currently listed for \$949,000 by Tracy Do of Compass.

<https://www.dwell.com/article/glassell-park-los-angeles-real-estate-216409c3>