

RENOVATIONS + REAL ESTATE

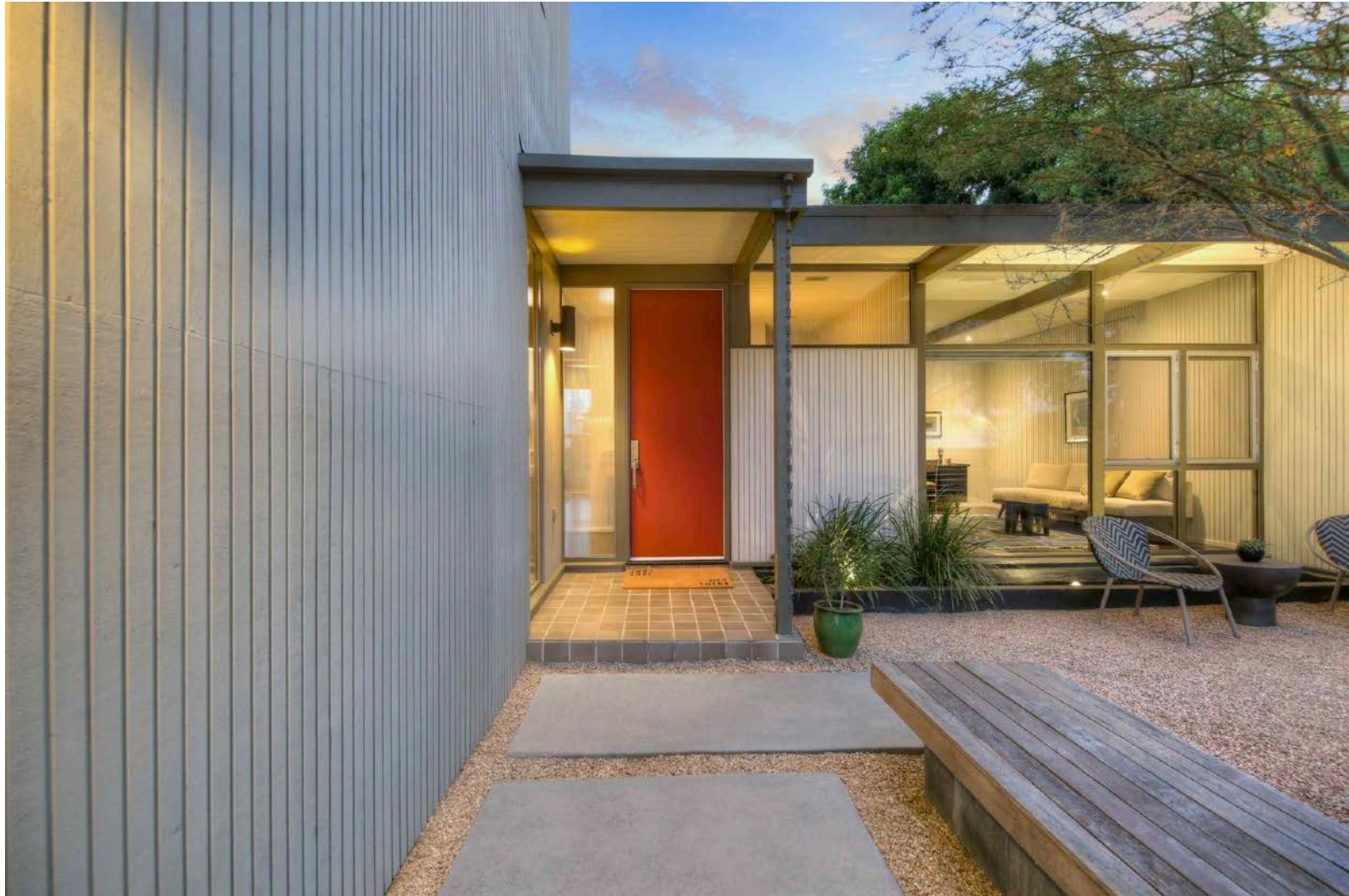
A Midcentury L.A. Home by Pioneering Chinese-American Architect Eugene K. Choy Seeks \$2M

By Kathryn M. — September 8, 2020

[View 20 Photos](#)

Originally built in 1956, the post-and-beam structure was stylishly renovated in 2008.

A renovated midcentury home designed by pioneering architect Eugene Kinn Choy was recently listed for sale in Los Angeles. Choy—the first Chinese American in southern California to join the American Institute of Architects (AIA)—completed the hilltop post-and-beam structure in 1956. The home is one of several single-family residences Choy designed in Silver Lake, and the architect's portfolio also includes commercial and public structures in L.A.'s Chinatown district.



Originally built in 1956, the home was expanded in 1973—and the two sections now join at the main entrance. The facade is clad in ribbed wood paneling, which covers the interior walls.



The entry opens into a living area, with the kitchen to one side. Throughout the home, painted posts and beams contrast with the dark wood floors and white tongue-and-groove ceilings.



A peninsula provides seating in the kitchen. Doors along the opposite wall are clad in matching wood paneling to minimize their appearance.



Known as the Kawaguchi House after its original owners, the two-bedroom structure was expanded in 1973 by architect Jack Levinson, who added a two-story addition to the front. Levinson mirrored Choi's original design by replicating the home's beamed ceilings and wood-paneled walls.

In 2008, the home's most recent owners hired architect and interior designer Thomas Michna to restore and update the home. Michna's efforts complement both the old and new sections with a cohesive and refined look.



Located a few steps away from the kitchen, along the rear of the home, the living room features full-height glass walls and a floating concrete fireplace hearth.



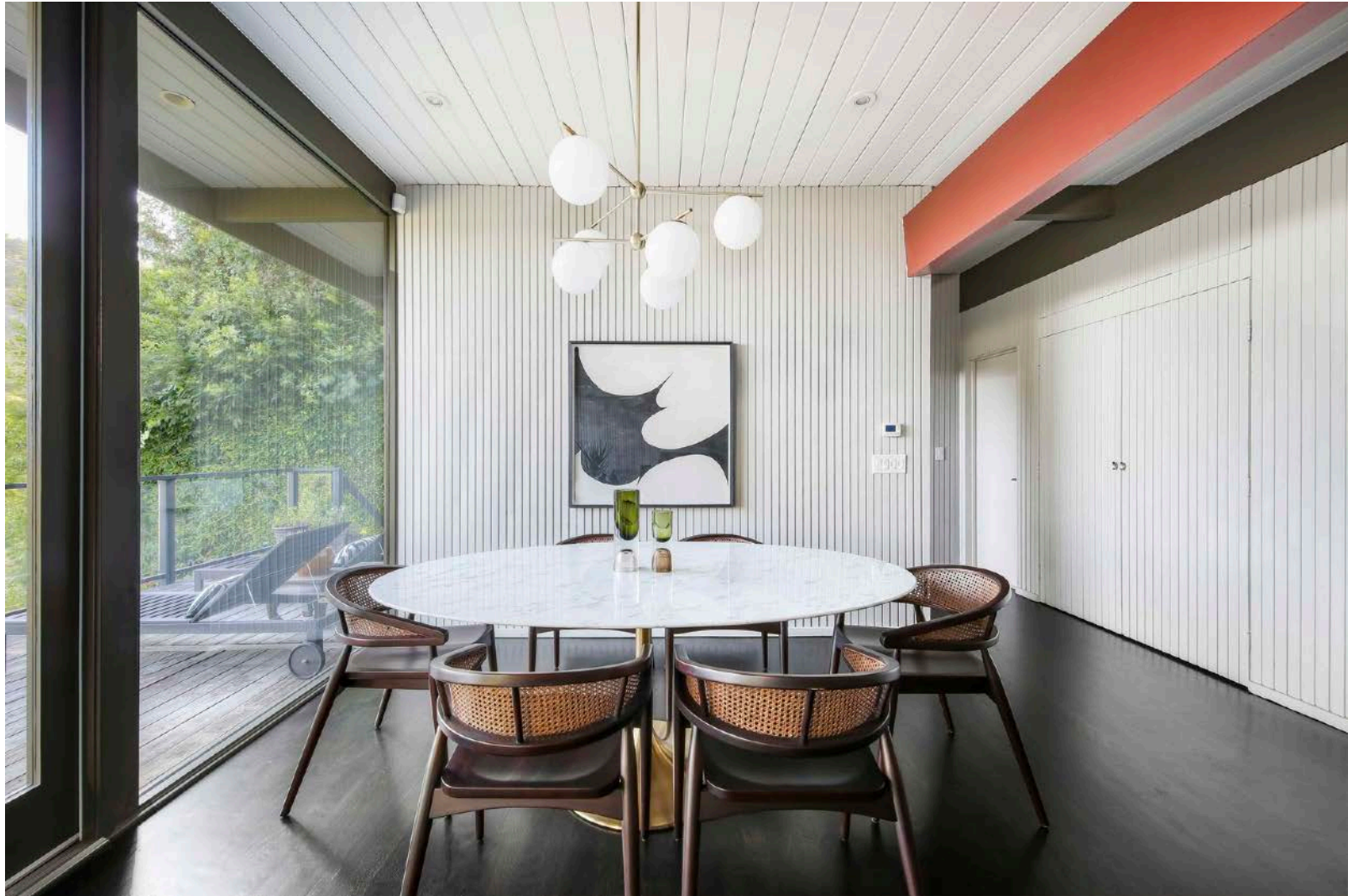
Another view of the living area shows the steel-and-glass staircase that leads up to a full-floor bedroom suite. Michna replaced a previous spiral staircase during the 2008 renovation.



The renovated home offers 1,700 square feet of living space, with three bedrooms and two full bathrooms. The main level features an open living/dining area and kitchen, along with two bedrooms. A stylishly updated bedroom suite occupies the entire second floor.

Outside, a courtyard surrounds the front facade, while a rear deck and lower-level terrace provide space for entertaining. The property also comes with a two-car garage, additional storage areas, and rooftop solar panels. Keep scrolling to see more of the home, currently listed for \$1,995,000.

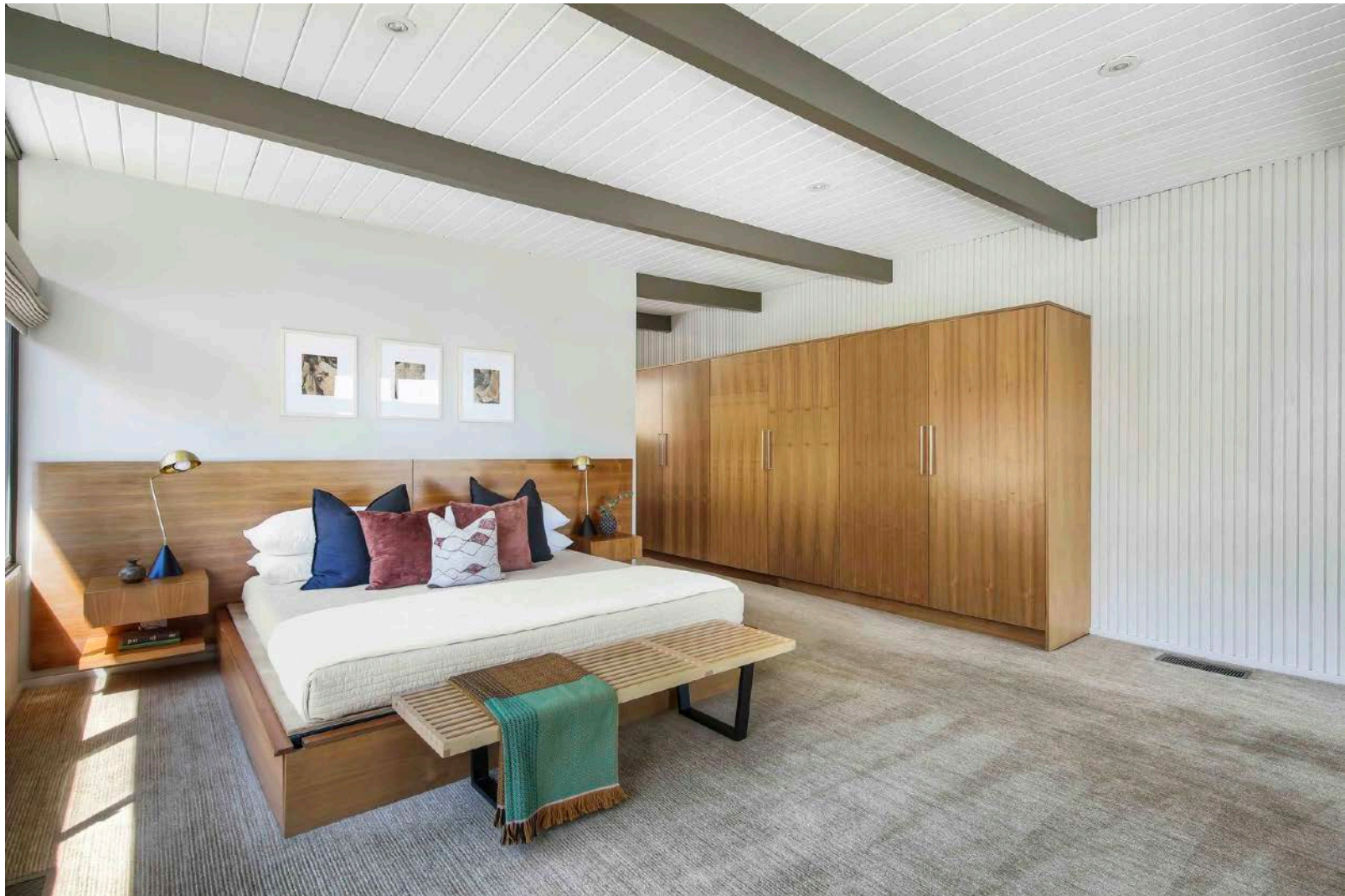




A closer look at the dining area.



Upstairs, the principal suite reflects the work of both Jack Levinson, who designed the entire two-story addition in 1973, and interior designer Thomas Michna, who converted the space from a family room to a full-floor suite in 2008.



A view from the principal bedroom toward the bathroom.

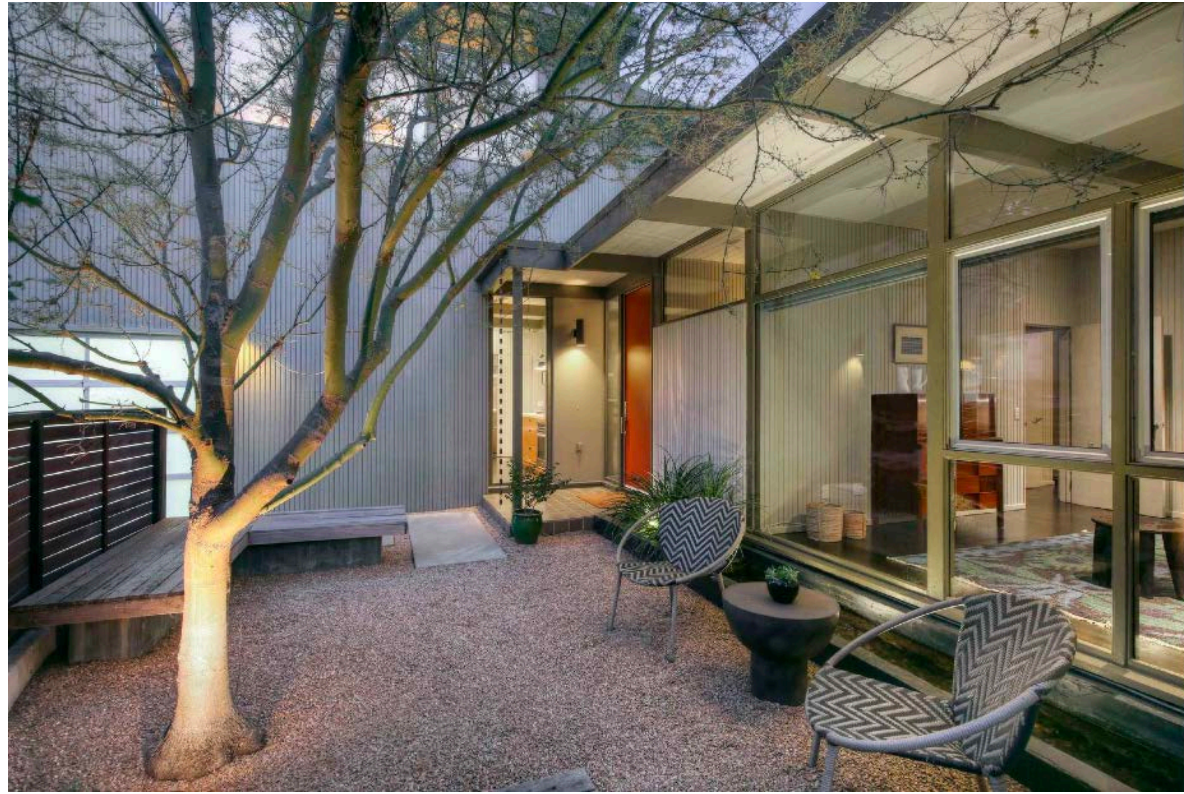




The deck stretches across the south-facing rear facade and overlooks a portion of Silver Lake below.



The hillside lot also features a terrace further down the slope. The Jack Levinson–designed addition can be seen behind the original glass-walled section.



A view from the street shows the original 1956 structure, as well as the two-story addition completed in 1973. New redwood fencing encloses the property.

3022 Windsor Avenue in Los Angeles, California, is currently listed for \$1,995,000 by Tracy Do of Compass.

<https://www.dwell.com/article/kawaguchi-house-eugene-k-choi-real-estate-f96908cb>